

DOWNHILL BIKE TRAILS

Downhill bike traffic ONLY MILES

| | | |
|------------------|-----|---|
| Bear Grass | 4.5 | - |
| Rock Garden Spur | 0.2 | - |
| Stumpy's Spur | 0.5 | - |
| Jumpy's Spur | 0.2 | - |
| Squirrel Master | 0.3 | - |
| Terraflow | 3.0 | - |
| Simple Jack | 0.2 | - |
| Collab | 1.0 | - |
| Pinch Flat | 1.7 | - |
| Butterstuff | 0.5 | - |
| Redemption | 0.9 | - |
| Moffitt's Edge | 0.7 | - |
| Shenanigans | 0.7 | - |
| Zig Zag | 0.7 | - |
| Shake 'n Bake | 0.8 | - |
| Collector | 0.8 | - |

MULTI-USE TRAILS

Multi-use / multi-direction trails. Use caution. Horses & motorized vehicles prohibited.

Schweitzer Trails

| Schweitzer Trails | MILES |
|--------------------|---------|
| Service Road | 2.5 = |
| Screech Owl | 0.3 - |
| Hermit's Hollow | 0.2 - |
| Overland | H 5.0 = |
| Upper GRR | 0.4 - |
| Lower GRR | H 0.9 = |
| Rolling Thunder | 0.7 - |
| Morris Mile | 0.7 - |
| Papa Bear | H 0.5 = |
| Mama Bear | 0.3 - |
| Huckleberry Hill | 0.6 - |
| BSR | 0.2 - |
| Moose Trot | 0.5 - |
| Cougar Gulch | H 1.1 = |
| Coyote Canyon | 2.4 = |
| Cloudwalker | 1.1 = |
| Boomerang | 1.2 - |
| Wolf Ridge | 1.1 - |
| Colburn Lake Trail | 1.2 = |
| Sunnyside Road | 1.0 = |

Little Sand Creek / Basin Trails

Multi-use / multi-direction trails. Use caution. Not Patrolled or maintained by Schweitzer.

| | | |
|---------------|-----|---|
| High Point | 4.8 | - |
| Solar Ecstasy | 1.0 | - |
| Uleda Ridge | 1.0 | - |
| Sidewinder | 0.9 | - |
| Corkscrew | 0.2 | - |
| Sparky | 1.0 | - |
| Upper Basin | 1.0 | - |
| Flo | 1.8 | - |
| Telemark | 0.5 | - |
| Waterfall | 0.6 | - |
| View Ski Loop | 1.3 | - |

See reverse side for more Lower Basin Trails



Do not ride on Service Road.
Downhill bike traffic only.
Multi-use / multi-direction. Use caution.
Hiking only. No bikes.

ROUGH DIRT ROAD, NOT RECOMMENDED.

HIKING TRAILS

Foot traffic Only MILES

| | | |
|------------------------|-----|---|
| Nature Trail | 2.5 | - |
| Stewart's Loop | 0.3 | - |
| Summit View Loop | 0.5 | - |
| Colburn Lake Loop | 0.4 | - |
| Colburn Lake Connector | 1.0 | - |

Trail Info: For the most detailed and recent updates to this map please scan QR code or visit trailforks.com. Distances on these maps are close estimates. Devices may vary.

<<< Latest trail updates and more detailed trail info.

Weather: For the safety of our guests and staff, our chairlift and activities may be placed on hold or closed due to lightning or severe weather. Please call 208.263.9555 or visit schweitzer.com for the latest weather and operation updates.

Dogs/Pets: Pets must be kept on a leash at all times when on Schweitzer property. Please be courteous and clean up after your pet. Pets are not allowed on the lift (including service animals).

Horses: The only horses allowed on Schweitzer property are those contracted through Mountain Horse Adventures 208.263.TROT. All other horses are prohibited. You may encounter horses on trails designated with this symbol:

E-Bikes: Only Class 1 e-bikes are allowed on Schweitzer trails. This includes lift serviced trails as long as the e-bike fits in our loading trays.

AREA PATROLLED BY SCHWEITZER
Marked trails within this area are maintained and patrolled by Schweitzer during business hours. If you are within this area and need assistance call **208.603.2173**
When calling for assistance, please reference the TRAIL NAME.
In an emergency, after hours, or anytime you are outside this boundary please call **911**

Schweitzer Bike/Ski Patrol recommends AirFlare.
AirFlare turns your phone into a safety beacon. Scan here for more info about AirFlare App.

MAP LEGEND

- Paved road
- Dirt road
- Dirt road: No Access. Official vehicle use only.
- Dirt road: Use Caution. Official vehicle use only.
- Hiking trail - Foot traffic ONLY
- Multi-use trail - Shared trails, use caution. Horses & motorized vehicles prohibited.
- Downhill trail - Downhill bike traffic ONLY
- Area patrolled by Schweitzer
- Chairlift CLOSED in summer
- Chairlift OPEN in summer
- Beginner bike trail / Intermediate bike trail
- Advanced bike trail / Expert bike trail
- Single track trail
- Double track trail or dirt road
- First Aid
- Food Options
- Restrooms
- View Spot

For more policies and safety info please visit schweitzer.com



TRAIL MAP

2024 **bike • hike • explore**



More Trail Info
For the most detailed trail info and recent updates to this map, please scan the code below or visit trailforks.com.



MOUNTAIN BIKER'S RESPONSIBILITY CODE

Stay in control You are responsible for avoiding objects and people.

Look out for others Look both ways and yield when entering or crossing a road or trail. When overtaking, use caution and yield to those ahead.

Know your limits Ride within your ability. Start small and work your way up.

Protect yourself Use an appropriate bike and protective equipment.

Maintain your equipment Inspect and know your components and their operation prior to riding.

Be lift smart Know how to load, ride and unload safely. Ask if you need help.

Inspect the trails & features Conditions change constantly; plan and adjust your riding accordingly.

Obey signs and warnings Stay on marked trails only. Keep off closed trails and features. Ride in the direction indicated.

Be visible Do not stop where you obstruct a trail, feature, landing or are not visible.

Cooperate If involved in or a witness to an incident, report it immediately to 208.263.9555 and stay at location until patrol arrives.

Respect wildlife Do not feed, provoke or approach wildlife.

Leave no trace. Be sensitive to the ground beneath you. Be sure to pack out more than you pack in.

HOURS

Summer SeasonMid June through Labor Day
Great Escape ChairliftOpen daily 11am-5pm*
Last chair down at 6pm*
Village ActivitiesOpen daily 11am-5pm*
Summer Activity CenterOpen daily 9am-5pm
Sky HouseOpen daily 11:30am-5pm*

LIFT TICKETS & RENTALS

All lift tickets are good for one day of unlimited rides*

- Scenic Foot Passenger Lift Ticket
- Mountain Bike Lift Ticket
- Ultimate Fun Pass: One day of UNLIMITED: scenic lift rides, zip line, climbing wall, trampoline jumper and one bag of "jewels" for the sluice box!

Rentals are located in the Ski & Ride Center

- Junior and adult full suspension MTB
- Downhill MTB packages with full face helmet & armor
- Full suspension e-bikes plus strider bikes for the little riders
- Tennis rackets, basketballs, disc golf, pickleball & more

DINING, SHOPPING, & SPA

For current hours of operation please visit schweitzer.com

Crow's Bench Elevated mountain cuisine and creative cocktails located in Humbird.

Sky House at the summit! Serving small plates, sandwiches, wraps, and more – all at 6,375 feet.

Cabinet Mt. Summer Café Fruit smoothies, acai bowls, salads, wine slushes, house cocktails.

Gourmandie Fine wines, craft beers, gourmet meats and cheeses, fruit platters, and sandwiches.

Mojo Café Espresso, baked goods, and breakfast burritos.

Market & Liquor Store Snacks, drinks and convenience items. Plus hand-scooped ice cream cones!

Source Mountain Shop Check out the latest summer fashion, sunglasses, and bike gear from top name brands. Your one stop shop for Schweitzer logo gear and souvenirs.

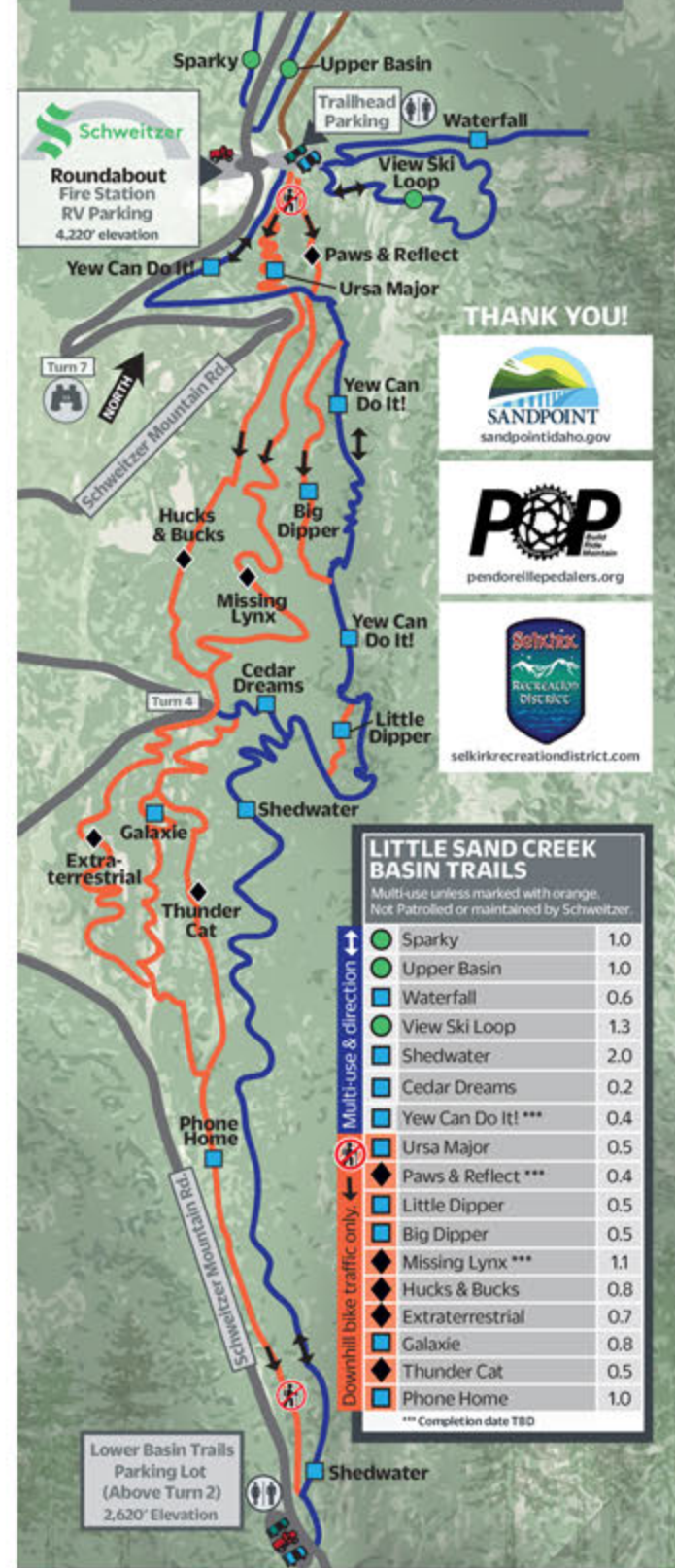
Cambium Spa Rev up. Reboot. Tune in. Cambium Spa offers yoga classes and unique treatments to maximize recovery and restoration.

LODGING OPEN YEAR-ROUND

Schweitzer has a variety of lodging options within steps of all the action. Hotel style rooms, suites, and condos. Plus, you'll have access to hot tubs and a heated swimming pool. Book now at 877.487.4643 or schweitzer.com.

***Weather permitting.** Weather can change quickly in the mountains and may cause a hold or closures of the chairlift and activities. Please come prepared. Age, weight, and shoe restrictions apply for certain activities. Hours are subject to vary throughout the year. For the most current information, pricing, and hours of operation, please call 208.263.9555 or visit schweitzer.com.

LOWER BASIN TRAILS INSET



LITTLE SAND CREEK WATERSHED TRAIL NETWORK

Trails outside Schweitzer owned property are part of the Little Sand Creek Watershed Trail Network.

Please note: These trails are not patrolled by Schweitzer. In the event of an emergency call 911.

These trails are maintained by dedicated trail enthusiasts from the City of Sandpoint, Pend Oreille Pedalers and the Selkirk Recreation District.

Little Sand Creek Watershed is the primary source of drinking water to Sandpoint residents. Trails within the watershed are maintained by Pend Oreille Pedalers Bicycle Club through donations and grants. Please help us protect this watershed.

Leave no trace & protect our natural resources.

- No shortcuts and avoid skidding with brakes
- Avoid trails during wet conditions
- No littering. Please remove the litter of others
- No fires
- Please use the restrooms at the top and bottom trailheads, not the trees

BIKE SHUTTLE

Selkirk Recreation District Bike Shuttle*

- \$10 per person, per ride (cash or Venmo only)
- Sat & Sun only during summer operations
- Shuttle leaves Red Barn parking lot at 10am, Noon, and 2pm
- Shuttle leaves the Lower Basin Trails parking lot at 11am, and 1pm
- Drop off at Village welcome sign
- Limited space, first come, first served

*For current shuttle schedule, trail updates and projects, visit SelkirkRecreationDistrict.com or call 208.610.8980

Popular at Schweitzer

Summit Views

A "must do" for locals and visitors, ride the Great Escape chairlift or hike the Nature Trail to enjoy one of the best views in the Pacific Northwest. Plus, enjoy lunch at Sky House providing delicious dining options and full bar.

Huckleberry Picking

Stop by the Summer Activity Center in the Ski & Ride Center during late July and August for tips on the best places to find our favorite berry! Please note we do not allow picking tools as it's better for the huckleberry bushes.

There's More!

Be sure to visit schweitzer.com for popular activities including hosted e-bike rides, playground, disc golf, zip line, music on Crow's Bench Patio, and more.

Stay safe, know the rules. Mountain biking involves the risk of serious injury or death. Your knowledge and actions contribute to your safety and the safety others. Helmets are required while riding a bike on Schweitzer property.

In an emergency please dial 911
Patrol assistance: 208.603.2173
General questions: 208.263.9555

Schweitzer Bike/Ski Patrol recommends AirFlare.

AirFlare turns your phone into a safety beacon. Scan here for more info about AirFlare App.

